

Products > Jewel Bearings > Ring Jewel Assemblies > RS-110-CO

Ring Jewel Assemblies - RS-110-CO

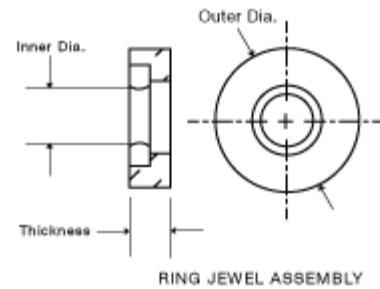
Specifications

| | |
|-------------------------|--------------|
| Model | RS-110-CO |
| Inside Diameter | .0124/.0126" |
| Outside Diameter | .1246/.1249" |
| Length | .155/.157" |
| Material | Brass |

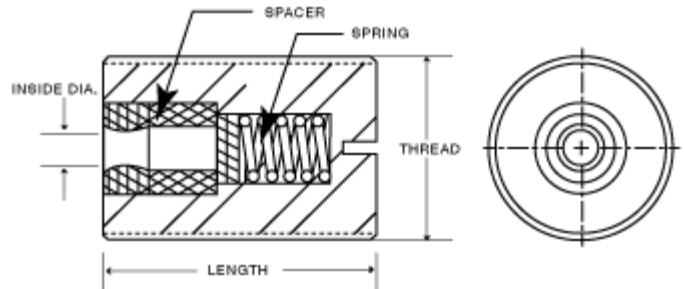


Description

Ring Jewels can be mounted into bushings or screws. This style can ease your mounting of the bearing into your final instrument. A ring jewel can be mounted into a plain bushing or into a screw to be coupled with an endstone. To assist with fine tuning assembly for load applications Ring Jewel Assemblies can also be mounted with or without a spring. Applications include Flow Meters, Gauges, Meters, Indicators, Aircraft Instruments, Gyros and Watches **Model Code:** B=Bombe, C=Cup, O=Olive, E=Endstone



RING JEWEL ASSEMBLY



SPRING-LOADED ASSEMBLY

NOT SEEING EXACTLY WHAT YOU NEED?

We specialize in creating a wide range of custom optical components and custom mechanical components including a variety of shapes - from internal holes and tapers to outer flanges, angles and surface finishes. Contact us and we will consult with you to create a custom component that meets all of your specifications.